

Casa 01

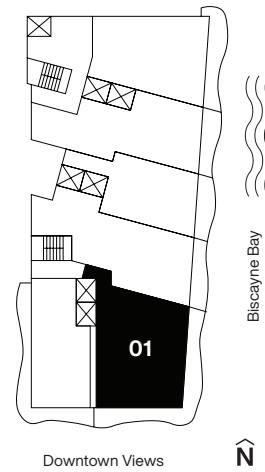
Floors 2 through 46

3 Bedrooms
3.5 Bathrooms

AC Area
1,953 sf / 182 m²

Outdoor Area
570 sf / 53 m²

Total Area
2,523 sf / 235 m²



Casa Bella

RESIDENCES

by **B&BITALIA**

The Art of Italian Living Curated by Piero Lissoni

CasaBellaResidences.com / info@CasaBellaResidences.com / 305-290-1008



ORAL REPRESENTATIONS CANNOT BE RELIED UPON AS CORRECTLY STATING REPRESENTATIONS OF THE DEVELOPER. FOR CORRECT REPRESENTATIONS, MAKE REFERENCE TO THE DOCUMENTS REQUIRED BY SECTION 718.503, FLORIDA STATUTES, TO BE FURNISHED BY A DEVELOPER TO A BUYER OR LESSEE. 1400 Biscayne Condominium is developed by PRH 1400 BISCAYNE 1, LLC

The dimensions stated for this unit floor plan are approximate because there are various recognized methods for calculating the square footage of a unit. The square footage stated here is calculated from the exterior boundaries of the exterior walls to the centerline of interior demising walls without deductions for cutouts, curves, or architectural features. This method typically results in quoted dimensions greater than the dimensions that would be determined by using other accepted methods. The definition of "Unit" and the calculation method to be relied upon is set forth in the Developer's Prospectus and the method set forth in the Developer's Prospectus may result in a square footage calculation less than the method used here. The balconies depicted are conceptual and the size will vary based floor level of unit, final permitting and completed construction. The illustrations and images are conceptual and may vary from concept to actual construction. The floor plan, unit layout, locations of windows, doors, closets, plumbing fixtures, mechanical equipment, appliances, structural elements, architectural design elements, and the uses, configurations, and entries to rooms may change based on final approved plans, permitting, and completed construction. The furniture plan and the uses of space illustrated are suggested uses only and not intended to guaranty or represent any specific use of space. Furnishings, design features, fixtures, and décor illustrated are conceptual and are not included with purchase of a Unit. Consult the Developer's Prospectus for information on what is offered with the Unit and the calculation of the Unit square footage and dimensions. The Developer, PRH 1400 BISCAYNE 1, LLC, is a licensee of: The Related Group, B&B Italia; and Piero Lissoni, but none of these licensors is the Developer. © 2021 with all rights reserved PRH 1400 BISCAYNE 1, LLC

Casa 02

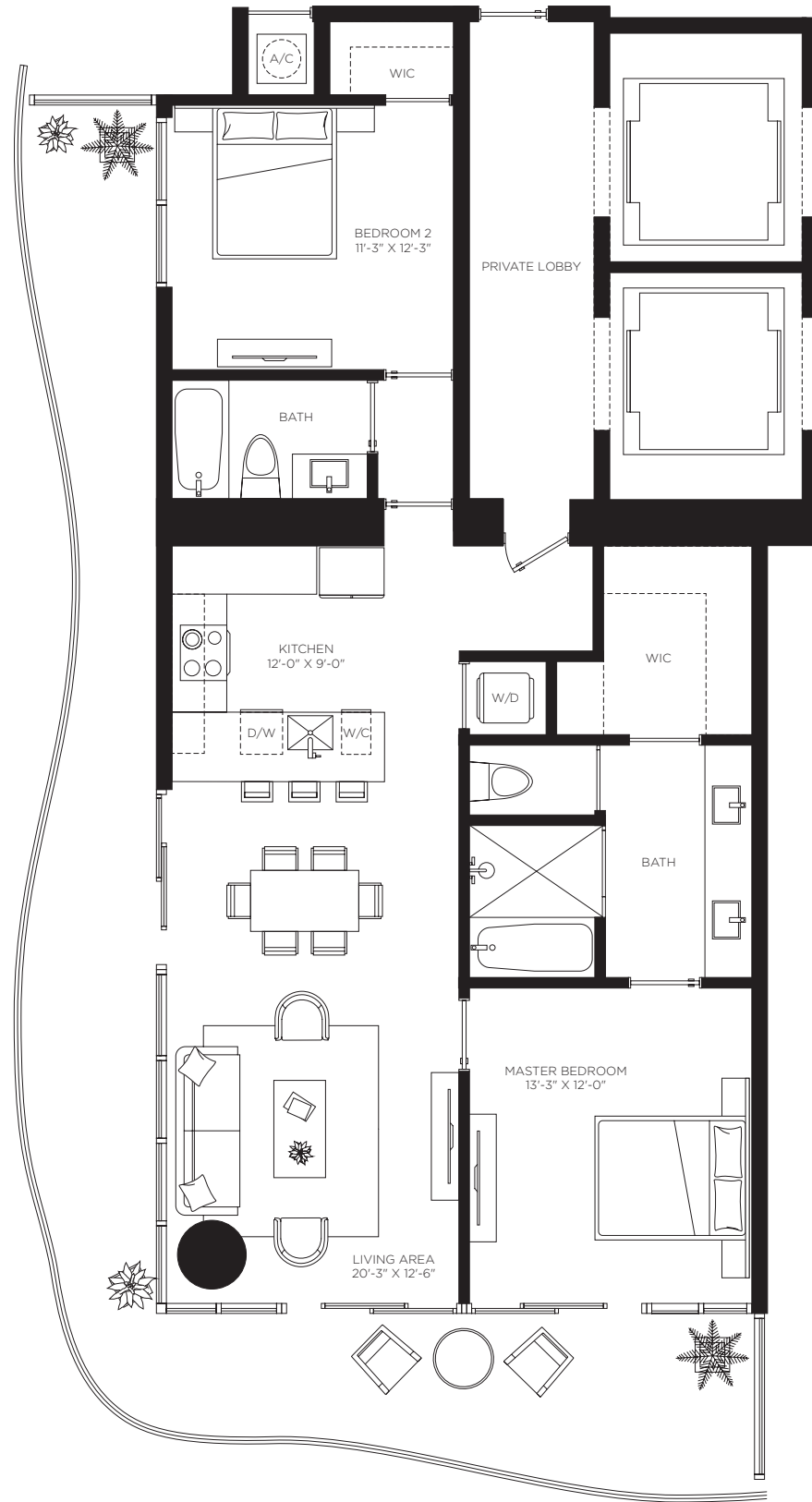
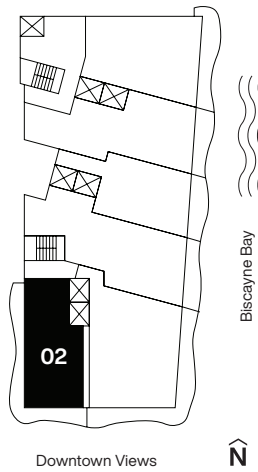
Floors 2 through 46

2 Bedrooms
2 Bathrooms

AC Area
1,303 sf / 121 m²

Outdoor Area
464 sf / 43 m²

Total Area
1,767 sf / 164 m²



Casa Bella

RESIDENCES

by **B&BITALIA**

The Art of Italian Living Curated by Piero Lissoni

CasaBellaResidences.com / info@CasaBellaResidences.com / 305-290-1008



ORAL REPRESENTATIONS CANNOT BE RELIED UPON AS CORRECTLY STATING REPRESENTATIONS OF THE DEVELOPER. FOR CORRECT REPRESENTATIONS, MAKE REFERENCE TO THE DOCUMENTS REQUIRED BY SECTION 718.503, FLORIDA STATUTES, TO BE FURNISHED BY A DEVELOPER TO A BUYER OR LESSEE. 1400 Biscayne Condominium is developed by PRH 1400 BISCAYNE 1, LLC

The dimensions stated for this unit floor plan are approximate because there are various recognized methods for calculating the square footage of a unit. The square footage stated here is calculated from the exterior boundaries of the exterior walls to the centerline of interior demising walls without deductions for cutouts, curves, or architectural features. This method typically results in quoted dimensions greater than the dimensions that would be determined by using other accepted methods. The definition of "Unit" and the calculation method to be relied upon is set forth in the Developer's Prospectus and the method set forth in the Developer's Prospectus may result in a square footage calculation less than the method used here. The balconies depicted are conceptual and the size will vary based floor level of unit, final permitting and completed construction. The illustrations and images are conceptual and may vary from concept to actual construction. The floor plan, unit layout, locations of windows, doors, closets, plumbing fixtures, mechanical equipment, appliances, structural elements, architectural design elements, and the uses, configurations, and entries to rooms may change based on final approved plans, permitting, and completed construction. The furniture plan and the uses of space illustrated are suggested uses only and not intended to guaranty or represent any specific use of space. Furnishings, design features, fixtures, and décor illustrated are conceptual and are not included with purchase of a Unit. Consult the Developer's Prospectus for information on what is offered with the Unit and the calculation of the Unit square footage and dimensions. The Developer, PRH 1400 BISCAYNE 1, LLC, is a licensee of: The Related Group, B&B Italia, and Piero Lissoni, but none of these licensors is the Developer. © 2021 with all rights reserved PRH 1400 BISCAYNE 1, LLC

Casa 03

Floors 2 through 47

2 Bedrooms
3 Bathrooms
Den

AC Area
1,819 sf / 169 m²

Outdoor Area
199 sf / 18 m²

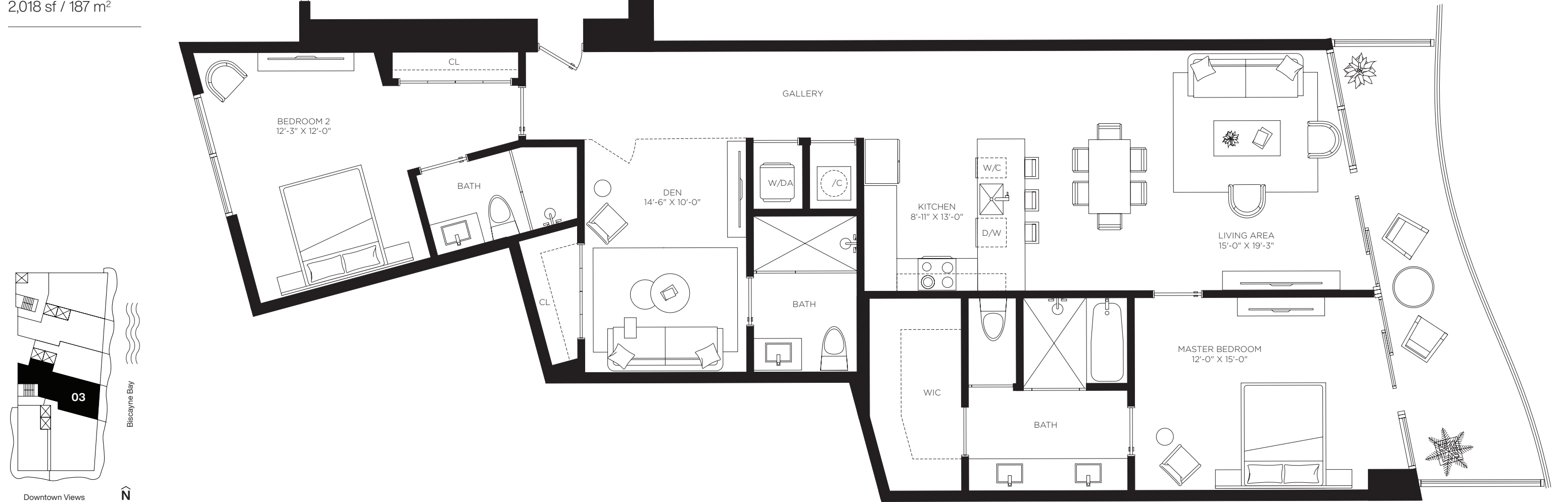
Total Area
2,018 sf / 187 m²

Casa Bella

RESIDENCES

by **B&BITALIA**

The Art of Italian Living Curated by Piero Lissoni



CasaBellaResidences.com / info@CasaBellaResidences.com / 305-290-1008



ORAL REPRESENTATIONS CANNOT BE RELIED UPON AS CORRECTLY STATING REPRESENTATIONS OF THE DEVELOPER. FOR CORRECT REPRESENTATIONS, MAKE REFERENCE TO THE DOCUMENTS REQUIRED BY SECTION 718.503, FLORIDA STATUTES, TO BE FURNISHED BY A DEVELOPER TO A BUYER OR LESSEE. 1400 Biscayne Condominium is developed by PRH 1400 BISCAYNE 1, LLC

The dimensions stated for this unit floor plan are approximate because there are various recognized methods for calculating the square footage of a unit. The square footage stated here is calculated from the exterior boundaries of the exterior walls to the centerline of interior demising walls without deductions for cutouts, curves, or architectural features. This method typically results in quoted dimensions greater than the dimensions that would be determined by using other accepted methods. The definition of "Unit" and the calculation method to be relied upon is set forth in the Developer's Prospectus and the method set forth in the Developer's Prospectus may result in a square footage calculation less than the method used here. The balconies depicted are conceptual and the size will vary based floor level of unit, final permitting and completed construction. The illustrations and images are conceptual and may vary from concept to actual construction. The floor plan, unit layout, locations of windows, doors, closets, plumbing fixtures, mechanical equipment, appliances, structural elements, architectural design elements, and the uses, configurations, and entries to rooms may change based on final approved plans, permitting, and completed construction. The furniture plan and the uses of space illustrated are suggested uses only and not intended to guaranty or represent any specific use of space. Furnishings, design features, fixtures, and décor illustrated are conceptual and are not included with purchase of a Unit. Consult the Developer's Prospectus for information on what is offered with the Unit and the calculation of the Unit square footage and dimensions. The Developer, PRH 1400 BISCAYNE 1, LLC, is a licensee of: The Related Group, B&B Italia; and Piero Lissoni, but none of these licensors is the Developer. © 2021 with all rights reserved PRH 1400 BISCAYNE 1, LLC

Casa 04

Floors 2 through 42

1 Bedroom
2 Bathrooms
Den

AC Area
1,216 sf / 113 m²

Outdoor Area
192 sf / 18 m²

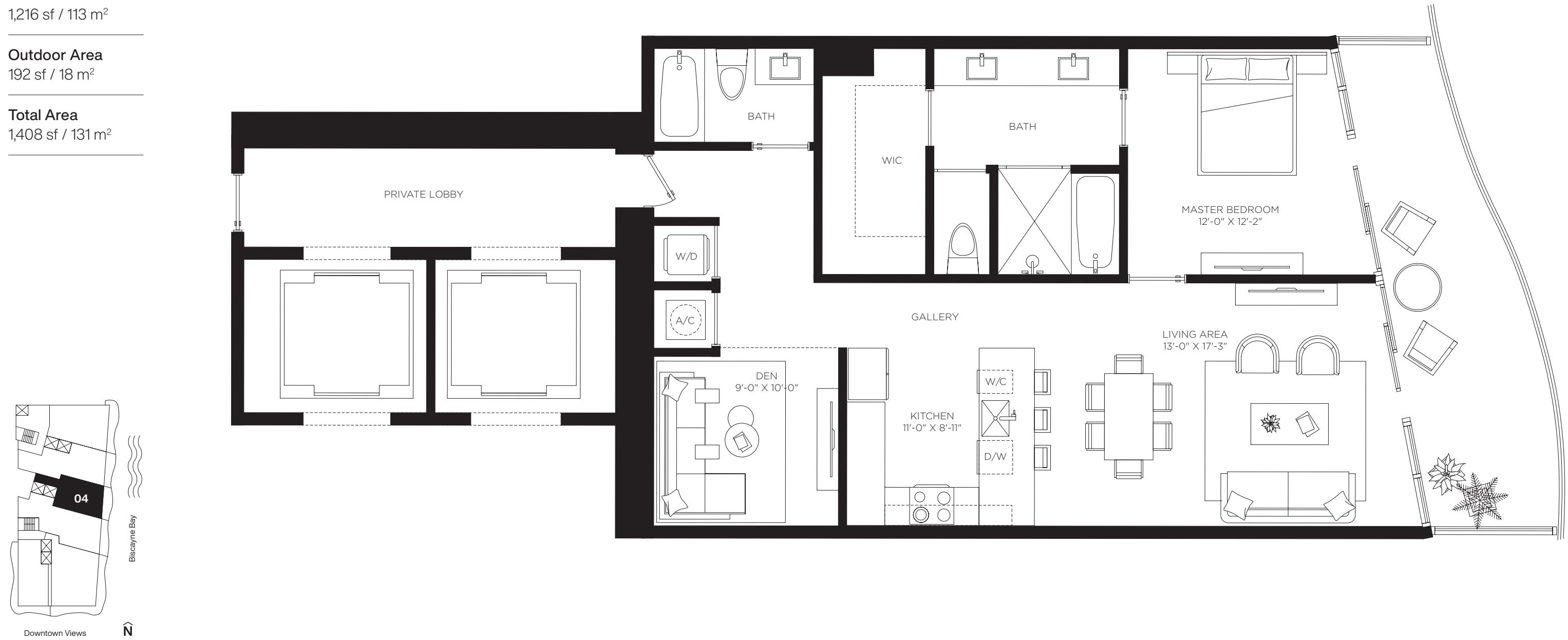
Total Area
1,408 sf / 131 m²

Casa Bella

RESIDENCES

by **B&BITALIA**

The Art of Italian Living Curated by Piero Lissoni



ORAL REPRESENTATIONS CANNOT BE RELIED UPON AS CORRECTLY STATING REPRESENTATIONS OF THE DEVELOPER. FOR CORRECT REPRESENTATIONS, MAKE REFERENCE TO THE DOCUMENTS REQUIRED BY SECTION 718.503, FLORIDA STATUTES, TO BE FURNISHED BY A DEVELOPER TO A BUYER OR LESSEE. 1400 Biscayne Condominium is developed by PRH 1400 BISCAYNE 1, LLC

The dimensions stated for this unit floor plan are approximate because there are various recognized methods for calculating the square footage of a unit. The square footage stated here is calculated from the exterior boundaries of the exterior walls to the centerline of interior demising walls without deductions for cutouts, curves, or architectural features. This method typically results in quoted dimensions greater than the dimensions that would be determined by using other accepted methods. The definition of "Unit" and the calculation method to be relied upon is set forth in the Developer's Prospectus and the method set forth in the Developer's Prospectus may result in a square footage calculation less than the method used here. The balconies depicted are conceptual and the size will vary based floor level of unit, final permitting and completed construction. The illustrations and images are conceptual and may vary from concept to actual construction. The floor plan, unit layout, locations of windows, doors, closets, plumbing fixtures, mechanical equipment, appliances, structural elements, architectural design elements, and the uses, configurations, and entries to rooms may change based on final approved plans, permitting, and completed construction. The furniture plan and the uses of space illustrated are suggested uses only and not intended to guaranty or represent any specific use of space. Furnishings, design features, fixtures, and décor illustrated are conceptual and are not included with purchase of a Unit. Consult the Developer's Prospectus for information on what is offered with the Unit and the calculation of the Unit square footage and dimensions. The Developer, PRH 1400 BISCAYNE 1, LLC, is a licensee of: The Related Group, B&B Italia; and Piero Lissoni, but none of these licensors is the Developer. © 2021 with all rights reserved PRH 1400 BISCAYNE 1, LLC

Casa 05

Floors 2 through 39

2 Bedrooms
3 Bathrooms
Den

AC Area
 1,613 sf / 150 m²

Outdoor Area
 189 sf / 18 m²

Total Area
 1,802 sf / 168 m²

Casa Bella

RESIDENCES

by **B&BITALIA**

The Art of Italian Living Curated by Piero Lissoni



ORAL REPRESENTATIONS CANNOT BE RELIED UPON AS CORRECTLY STATING REPRESENTATIONS OF THE DEVELOPER. FOR CORRECT REPRESENTATIONS, MAKE REFERENCE TO THE DOCUMENTS REQUIRED BY SECTION 718.503, FLORIDA STATUTES, TO BE FURNISHED BY A DEVELOPER TO A BUYER OR LESSEE. 1400 Biscayne Condominium is developed by PRH 1400 BISCAYNE 1, LLC

The dimensions stated for this unit floor plan are approximate because there are various recognized methods for calculating the square footage of a unit. The square footage stated here is calculated from the exterior boundaries of the exterior walls to the centerline of interior demising walls without deductions for cutouts, curves, or architectural features. This method typically results in quoted dimensions greater than the dimensions that would be determined by using other accepted methods. The definition of "Unit" and the calculation method to be relied upon is set forth in the Developer's Prospectus and the method set forth in the Developer's Prospectus may result in a square footage calculation less than the method used here. The balconies depicted are conceptual and the size will vary based floor level of unit, final permitting and completed construction. The illustrations and images are conceptual and may vary from concept to actual construction. The floor plan, unit layout, locations of windows, doors, closets, plumbing fixtures, mechanical equipment, appliances, structural elements, architectural design elements, and the uses, configurations, and entries to rooms may change based on final approved plans, permitting, and completed construction. The furniture plan and the uses of space illustrated are suggested uses only and not intended to guaranty or represent any specific use of space. Furnishings, design features, fixtures, and décor illustrated are conceptual and are not included with purchase of a Unit. Consult the Developer's Prospectus for information on what is offered with the Unit and the calculation of the Unit square footage and dimensions. The Developer, PRH 1400 BISCAYNE 1, LLC, is a licensee of: The Related Group; B&B Italia; and Piero Lissoni, but none of these licensors is the Developer. © 2021 with all rights reserved PRH 1400 BISCAYNE 1, LLC

Casa 06

Floors 37 through 47

4 Bedrooms
4 Bathrooms

AC Area
2,187 sf / 203 m²

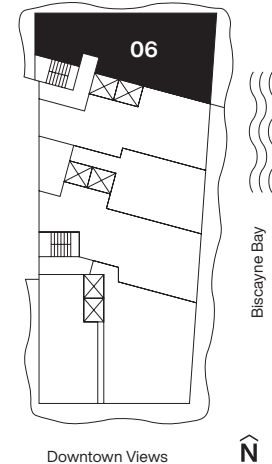
Outdoor Area
722 sf / 67 m²

Total Area
2,909 sf / 270 m²

Casa Bella

RESIDENCES

by **B&BITALIA**
The Art of Italian Living Curated by Piero Lissoni



ORAL REPRESENTATIONS CANNOT BE RELIED UPON AS CORRECTLY STATING REPRESENTATIONS OF THE DEVELOPER. FOR CORRECT REPRESENTATIONS, MAKE REFERENCE TO THE DOCUMENTS REQUIRED BY SECTION 718.503, FLORIDA STATUTES, TO BE FURNISHED BY A DEVELOPER TO A BUYER OR LESSEE. 1400 Biscayne Condominium is developed by PRH 1400 BISCAYNE 1, LLC

The dimensions stated for this unit floor plan are approximate because there are various recognized methods for calculating the square footage of a unit. The square footage stated here is calculated from the exterior boundaries of the exterior walls to the centerline of interior demising walls without deductions for cutouts, curves, or architectural features. This method typically results in quoted dimensions greater than the dimensions that would be determined by using other accepted methods. The definition of "Unit" and the calculation method to be relied upon is set forth in the Developer's Prospectus and the method set forth in the Developer's Prospectus may result in a square footage calculation less than the method used here. The balconies depicted are conceptual and the size will vary based floor level of unit, final permitting and completed construction. The illustrations and images are conceptual and may vary from concept to actual construction. The floor plan, unit layout, locations of windows, doors, closets, plumbing fixtures, mechanical equipment, appliances, structural elements, architectural design elements, and the uses, configurations, and entries to rooms may change based on final approved plans, permitting, and completed construction. The furniture plan and the uses of space illustrated are suggested uses only and not intended to guaranty or represent any specific use of space. Furnishings, design features, fixtures, and décor illustrated are conceptual and are not included with purchase of a Unit. Consult the Developer's Prospectus for information on what is offered with the Unit and the calculation of the Unit square footage and dimensions. The Developer, PRH 1400 BISCAYNE 1, LLC, is a licensee of: The Related Group, B&B Italia; and Piero Lissoni, but none of these licensors is the Developer. © 2021 with all rights reserved PRH 1400 BISCAYNE 1, LLC

Casa 06MOD

Floors 12 through 36

2 Bedrooms
2 Bathrooms

AC Area
1,326 sf / 123 m²

Outdoor Area
449 sf / 42 m²

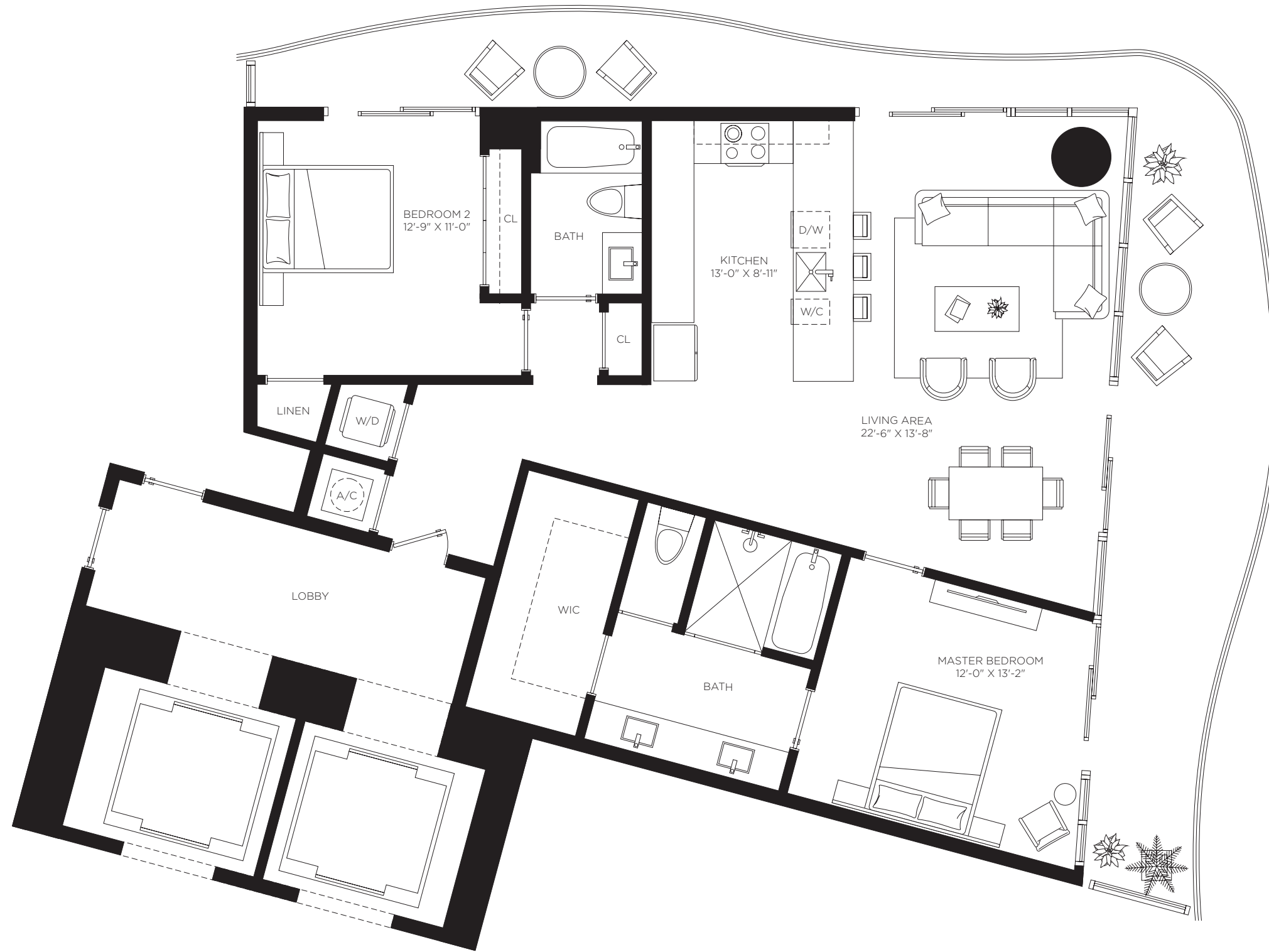
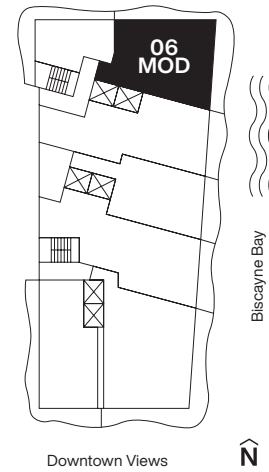
Total Area
1,775 sf / 165 m²

Casa Bella

RESIDENCES

by **B&BITALIA**

The Art of Italian Living Curated by Piero Lissoni



ORAL REPRESENTATIONS CANNOT BE RELIED UPON AS CORRECTLY STATING REPRESENTATIONS OF THE DEVELOPER. FOR CORRECT REPRESENTATIONS, MAKE REFERENCE TO THE DOCUMENTS REQUIRED BY SECTION 718.503, FLORIDA STATUTES, TO BE FURNISHED BY A DEVELOPER TO A BUYER OR LESSEE. 1400 Biscayne Condominium is developed by PRH 1400 BISCAYNE 1, LLC

The dimensions stated for this unit floor plan are approximate because there are various recognized methods for calculating the square footage of a unit. The square footage stated here is calculated from the exterior boundaries of the exterior walls to the centerline of interior demising walls without deductions for cutouts, curves, or architectural features. This method typically results in quoted dimensions greater than the dimensions that would be determined by using other accepted methods. The definition of "Unit" and the calculation method to be relied upon is set forth in the Developer's Prospectus and the method set forth in the Developer's Prospectus may result in a square footage calculation less than the method used here. The balconies depicted are conceptual and the size will vary based floor level of unit, final permitting and completed construction. The illustrations and images are conceptual and may vary from concept to actual construction. The floor plan, unit layout, locations of windows, doors, closets, plumbing fixtures, mechanical equipment, appliances, structural elements, architectural design elements, and the uses, configurations, and entries to rooms may change based on final approved plans, permitting, and completed construction. The furniture plan and the uses of space illustrated are suggested uses only and not intended to guaranty or represent any specific use of space. Furnishings, design features, fixtures, and décor illustrated are conceptual and are not included with purchase of a Unit. Consult the Developer's Prospectus for information on what is offered with the Unit and the calculation of the Unit square footage and dimensions. The Developer, PRH 1400 BISCAYNE 1, LLC, is a licensee of: The Related Group, B&B Italia; and Piero Lissoni, but none of these licensors is the Developer. © 2021 with all rights reserved PRH 1400 BISCAYNE 1, LLC

Casa 06MOD2

Floors 2 through 9

1 Bedroom
2 Bathrooms
Den

AC Area
1,595 sf / 148 m²

Outdoor Area
290 sf / 27 m²

Total Area
1,885 sf / 175 m²

Casa Bella

RESIDENCES

by **B&BITALIA**

The Art of Italian Living Curated by Piero Lissoni



CasaBellaResidences.com / info@CasaBellaResidences.com / 305-290-1008



ORAL REPRESENTATIONS CANNOT BE RELIED UPON AS CORRECTLY STATING REPRESENTATIONS OF THE DEVELOPER. FOR CORRECT REPRESENTATIONS, MAKE REFERENCE TO THE DOCUMENTS REQUIRED BY SECTION 718.503, FLORIDA STATUTES, TO BE FURNISHED BY A DEVELOPER TO A BUYER OR LESSEE. 1400 Biscayne Condominium is developed by PRH 1400 BISCAYNE 1, LLC

The dimensions stated for this unit floor plan are approximate because there are various recognized methods for calculating the square footage of a unit. The square footage stated here is calculated from the exterior boundaries of the exterior walls to the centerline of interior demising walls without deductions for cutouts, curves, or architectural features. This method typically results in quoted dimensions greater than the dimensions that would be determined by using other accepted methods. The definition of "Unit" and the calculation method to be relied upon is set forth in the Developer's Prospectus and the method set forth in the Developer's Prospectus may result in a square footage calculation less than the method used here. The balconies depicted are conceptual and the size will vary based floor level of unit, final permitting and completed construction. The illustrations and images are conceptual and may vary from concept to actual construction. The floor plan, unit layout, locations of windows, doors, closets, plumbing fixtures, mechanical equipment, appliances, structural elements, architectural design elements, and the uses, configurations, and entries to rooms may change based on final approved plans, permitting, and completed construction. The furniture plan and the uses of space illustrated are suggested uses only and not intended to guaranty or represent any specific use of space. Furnishings, design features, fixtures, and décor illustrated are conceptual and are not included with purchase of a Unit. Consult the Developer's Prospectus for information on what is offered with the Unit and the calculation of the Unit square footage and dimensions. The Developer, PRH 1400 BISCAYNE 1, LLC, is a licensee of: The Related Group, B&B Italia; and Piero Lissoni, but none of these licensors is the Developer. © 2021 with all rights reserved PRH 1400 BISCAYNE 1, LLC

Casa 07

Floors 12 through 36

1 Bedroom
1 Bathroom

AC Area
711 sf / 66 m²

Outdoor Area
281 sf / 26 m²

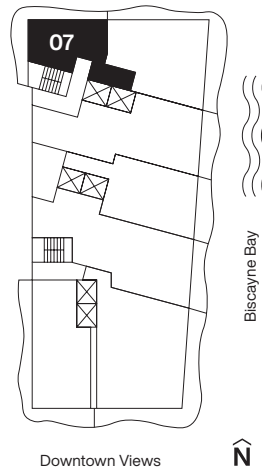
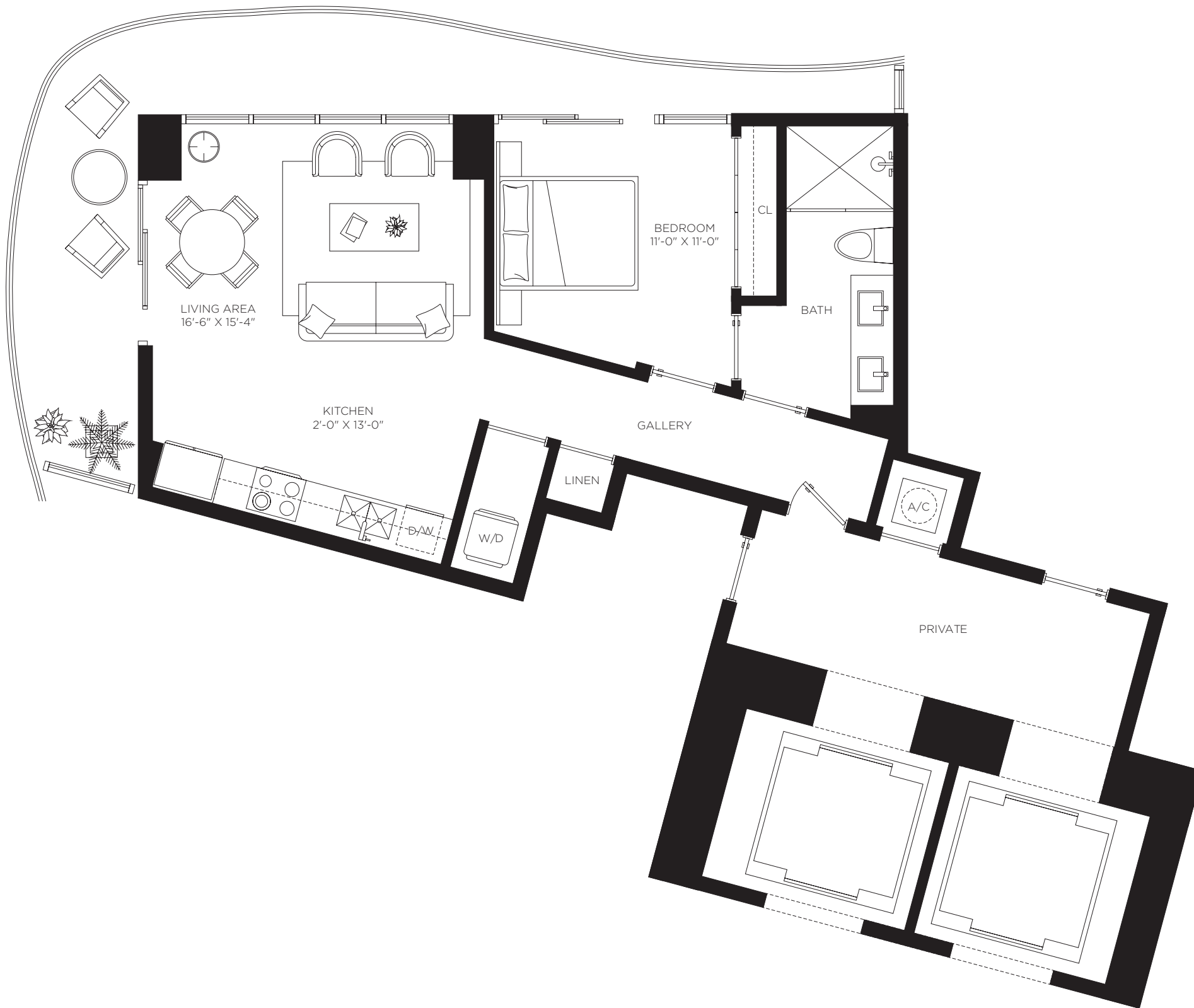
Total Area
992 sf / 92 m²

Casa Bella

RESIDENCES

by **B&BITALIA**

The Art of Italian Living Curated by Piero Lissoni



Casa 08

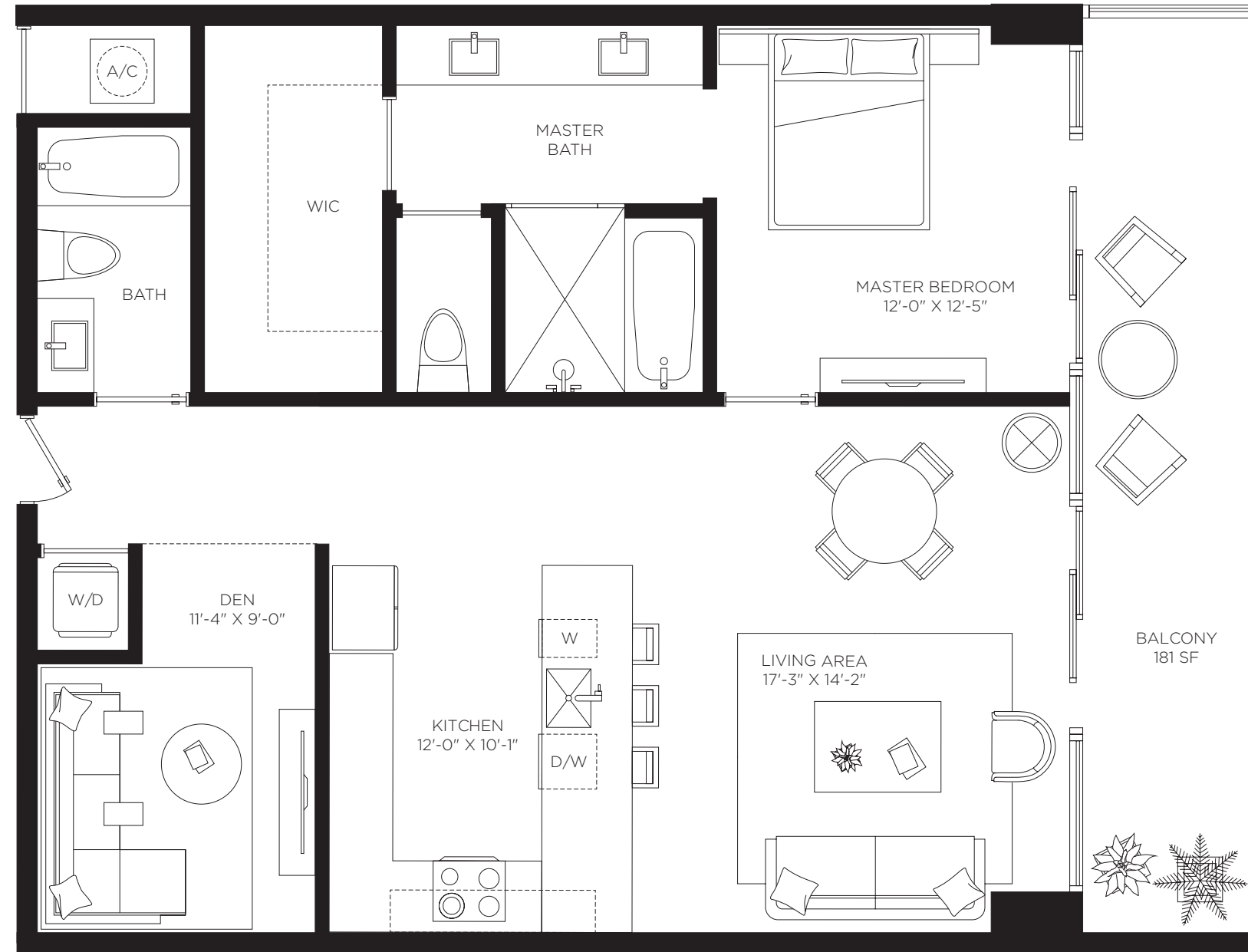
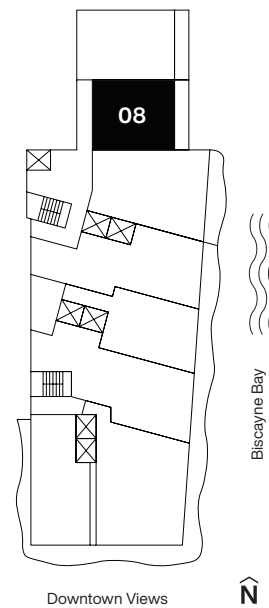
Floors 2 through 8

1 Bedrooms
2 Bathrooms
Den

AC Area
1,060 sf / 98.5 m²

Outdoor Area
181 sf / 17 m²

Total Area
1,241 sf / 115 m²



Casa Bella

RESIDENCES

by **B&BITALIA**

The Art of Italian Living Curated by Piero Lissoni

CasaBellaResidences.com / info@CasaBellaResidences.com / 305-290-1008



ORAL REPRESENTATIONS CANNOT BE RELIED UPON AS CORRECTLY STATING REPRESENTATIONS OF THE DEVELOPER. FOR CORRECT REPRESENTATIONS, MAKE REFERENCE TO THE DOCUMENTS REQUIRED BY SECTION 718.503, FLORIDA STATUTES, TO BE FURNISHED BY A DEVELOPER TO A BUYER OR LESSEE. 1400 Biscayne Condominium is developed by PRH 1400 BISCAYNE 1, LLC

The dimensions stated for this unit floor plan are approximate because there are various recognized methods for calculating the square footage of a unit. The square footage stated here is calculated from the exterior boundaries of the exterior walls to the centerline of interior demising walls without deductions for cutouts, curves, or architectural features. This method typically results in quoted dimensions greater than the dimensions that would be determined by using other accepted methods. The definition of "Unit" and the calculation method to be relied upon is set forth in the Developer's Prospectus and the method set forth in the Developer's Prospectus may result in a square footage calculation less than the method used here. The balconies depicted are conceptual and the size will vary based floor level of unit, final permitting and completed construction. The illustrations and images are conceptual and may vary from concept to actual construction. The floor plan, unit layout, locations of windows, doors, closets, plumbing fixtures, mechanical equipment, appliances, structural elements, architectural design elements, and the uses, configurations, and entries to rooms may change based on final approved plans, permitting, and completed construction. The furniture plan and the uses of space illustrated are suggested uses only and not intended to guaranty or represent any specific use of space. Furnishings, design features, fixtures, and décor illustrated are conceptual and are not included with purchase of a Unit. Consult the Developer's Prospectus for information on what is offered with the Unit and the calculation of the Unit square footage and dimensions. The Developer, PRH 1400 BISCAYNE 1, LLC, is a licensee of: The Related Group, B&B Italia; and Piero Lissoni, but none of these licensors is the Developer. © 2021 with all rights reserved PRH 1400 BISCAYNE 1, LLC

Casa 08MOD

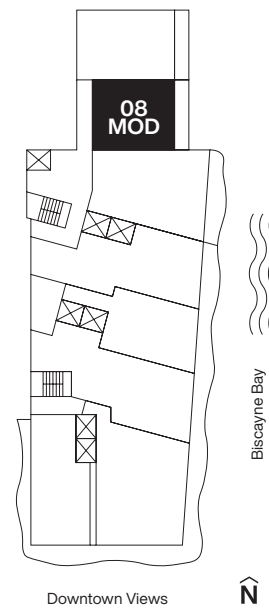
Floor 9

2 Bedrooms
2.5 Bathrooms
Den

AC Area
1,878 sf / 175 m²

Outdoor Area
181 sf / 17 m²

Total Area
2,059 sf / 191 m²



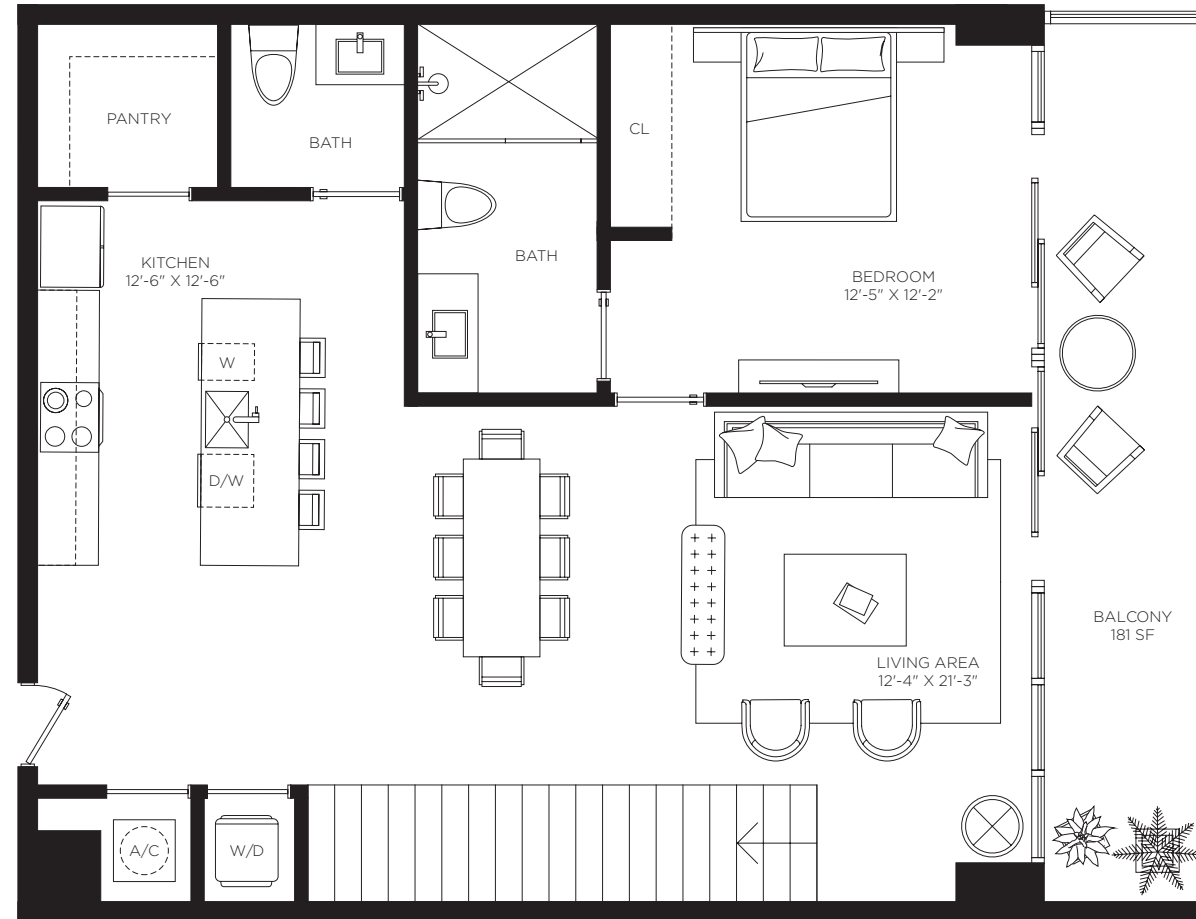
Casa Bella

RESIDENCES

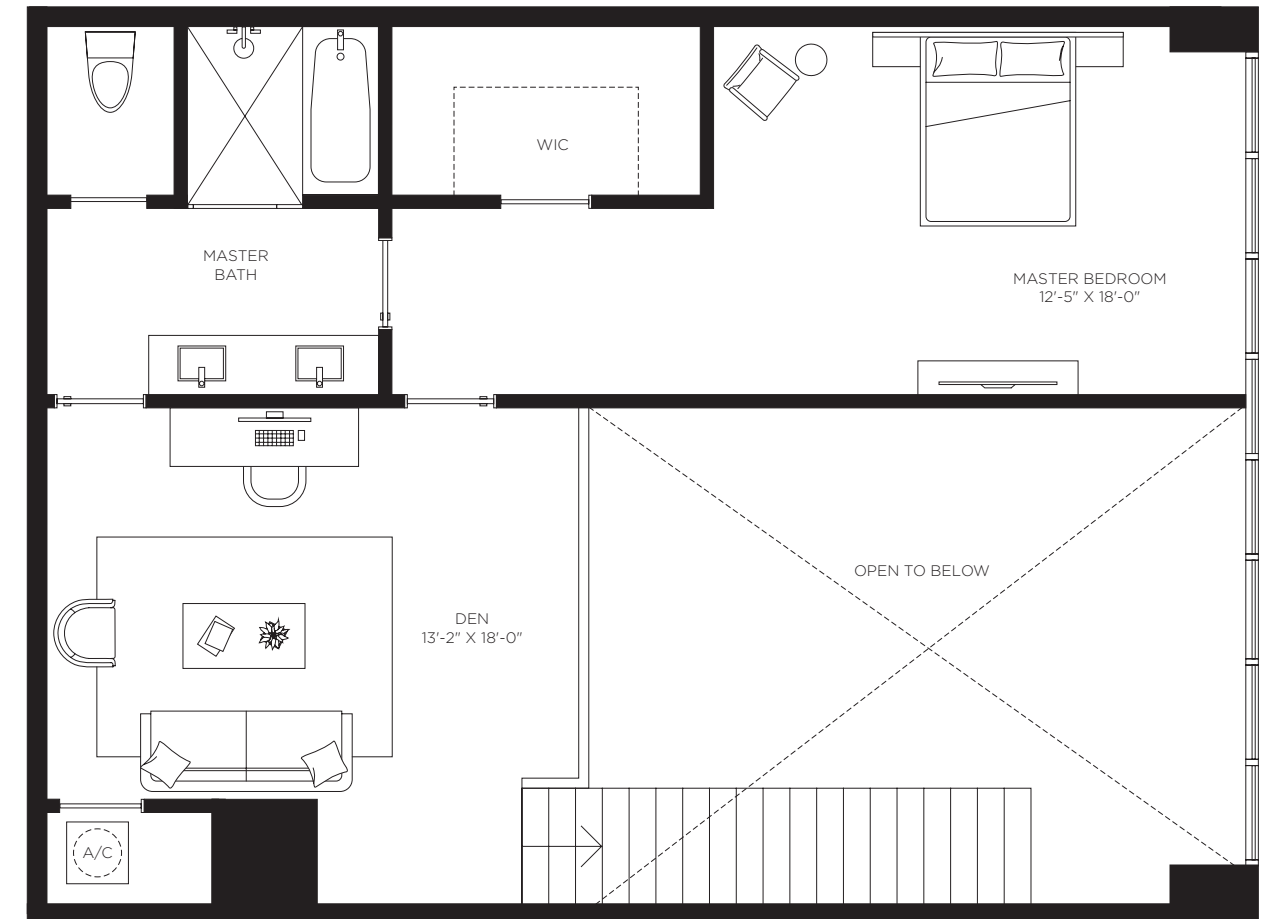
by **B&BITALIA**

The Art of Italian Living Curated by Piero Lissoni

1st Floor



2nd Floor



CasaBellaResidences.com / info@CasaBellaResidences.com / 305-290-1008



ORAL REPRESENTATIONS CANNOT BE RELIED UPON AS CORRECTLY STATING REPRESENTATIONS OF THE DEVELOPER. FOR CORRECT REPRESENTATIONS, MAKE REFERENCE TO THE DOCUMENTS REQUIRED BY SECTION 718.503, FLORIDA STATUTES, TO BE FURNISHED BY A DEVELOPER TO A BUYER OR LESSEE. 1400 Biscayne Condominium is developed by PRH 1400 BISCAYNE 1, LLC

The dimensions stated for this unit floor plan are approximate because there are various recognized methods for calculating the square footage of a unit. The square footage stated here is calculated from the exterior boundaries of the exterior walls to the centerline of interior demising walls without deductions for cutouts, curves, or architectural features. This method typically results in quoted dimensions greater than the dimensions that would be determined by using other accepted methods. The definition of "Unit" and the calculation method to be relied upon is set forth in the Developer's Prospectus and the method set forth in the Developer's Prospectus may result in a square footage calculation less than the method used here. The balconies depicted are conceptual and the size will vary based floor level of unit, final permitting and completed construction. The illustrations and images are conceptual and may vary from concept to actual construction. The floor plan, unit layout, locations of windows, doors, closets, plumbing fixtures, mechanical equipment, appliances, structural elements, architectural design elements, and the uses, configurations, and entries to rooms may change based on final approved plans, permitting, and completed construction. The furniture plan and the uses of space illustrated are suggested uses only and not intended to guaranty or represent any specific use of space. Furnishings, design features, fixtures, and décor illustrated are conceptual and are not included with purchase of a Unit. Consult the Developer's Prospectus for information on what is offered with the Unit and the calculation of the Unit square footage and dimensions. The Developer, PRH 1400 BISCAYNE 1, LLC, is a licensee of: The Related Group, B&B Italia; and Piero Lissoni, but none of these licensors is the Developer. © 2021 with all rights reserved PRH 1400 BISCAYNE 1, LLC

Casa 09

Floors 2 through 8

1 Bedrooms
2 Bathrooms
Den

AC Area
1,190 sf / 111 m²

Outdoor Area
172 sf / 16 m²

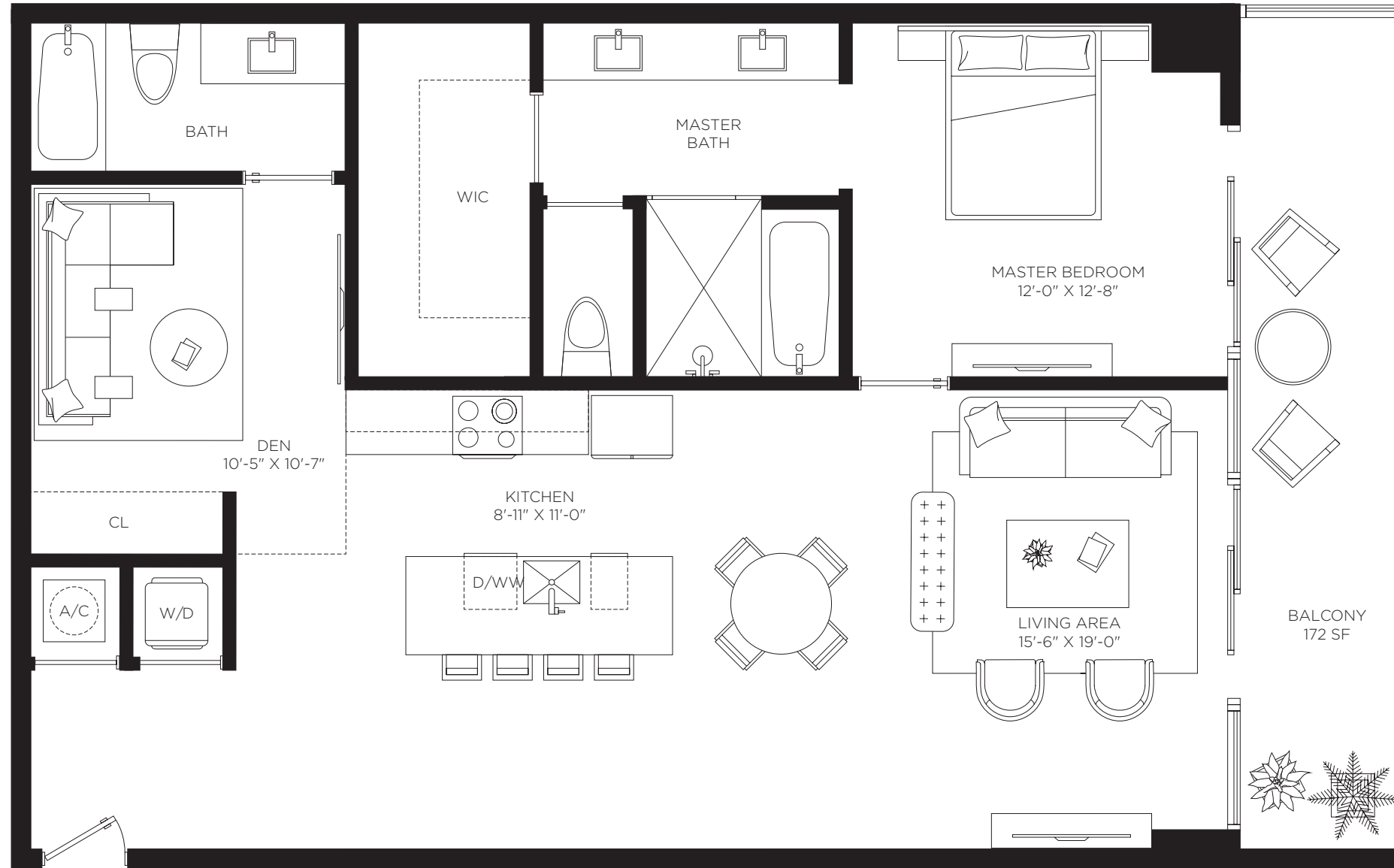
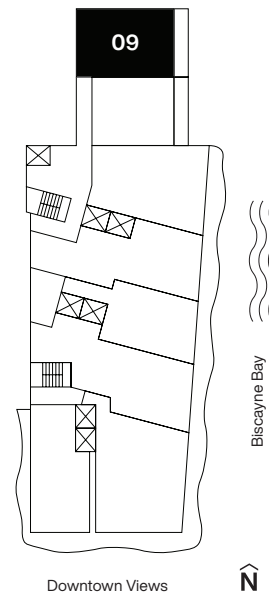
Total Area
1,362 sf / 127 m²

Casa Bella

RESIDENCES

by **B&BITALIA**

The Art of Italian Living Curated by Piero Lissoni



CasaBellaResidences.com / info@CasaBellaResidences.com / 305-290-1008



ORAL REPRESENTATIONS CANNOT BE RELIED UPON AS CORRECTLY STATING REPRESENTATIONS OF THE DEVELOPER. FOR CORRECT REPRESENTATIONS, MAKE REFERENCE TO THE DOCUMENTS REQUIRED BY SECTION 718.503, FLORIDA STATUTES, TO BE FURNISHED BY A DEVELOPER TO A BUYER OR LESSEE. 1400 Biscayne Condominium is developed by PRH 1400 BISCAYNE 1, LLC

The dimensions stated for this unit floor plan are approximate because there are various recognized methods for calculating the square footage of a unit. The square footage stated here is calculated from the exterior boundaries of the exterior walls to the centerline of interior demising walls without deductions for cutouts, curves, or architectural features. This method typically results in quoted dimensions greater than the dimensions that would be determined by using other accepted methods. The definition of "Unit" and the calculation method to be relied upon is set forth in the Developer's Prospectus and the method set forth in the Developer's Prospectus may result in a square footage calculation less than the method used here. The balconies depicted are conceptual and the size will vary based floor level of unit, final permitting and completed construction. The illustrations and images are conceptual and may vary from concept to actual construction. The floor plan, unit layout, locations of windows, doors, closets, plumbing fixtures, mechanical equipment, appliances, structural elements, architectural design elements, and the uses, configurations, and entries to rooms may change based on final approved plans, permitting, and completed construction. The furniture plan and the uses of space illustrated are suggested uses only and not intended to guaranty or represent any specific use of space. Furnishings, design features, fixtures, and décor illustrated are conceptual and are not included with purchase of a Unit. Consult the Developer's Prospectus for information on what is offered with the Unit and the calculation of the Unit square footage and dimensions. The Developer, PRH 1400 BISCAYNE 1, LLC, is a licensee of: The Related Group, B&B Italia; and Piero Lissoni, but none of these licensors is the Developer. © 2021 with all rights reserved PRH 1400 BISCAYNE 1, LLC

Casa 09MOD

Floor 9

2 Bedrooms
3 Bathrooms
Den

AC Area
2,053 sf / 191 m²

Outdoor Area
172 sf / 16 m²

Total Area
2,225 sf / 207 m²

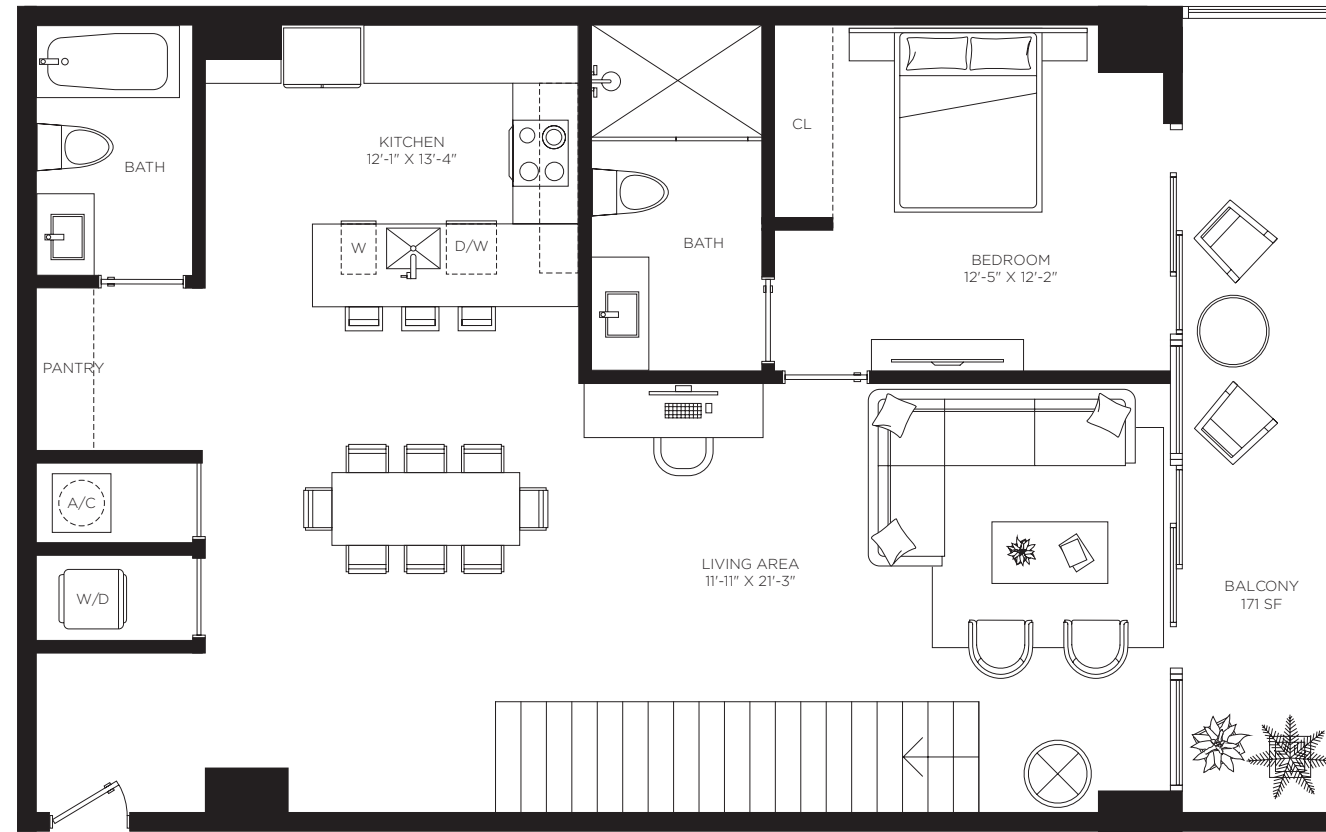
Casa Bella

RESIDENCES

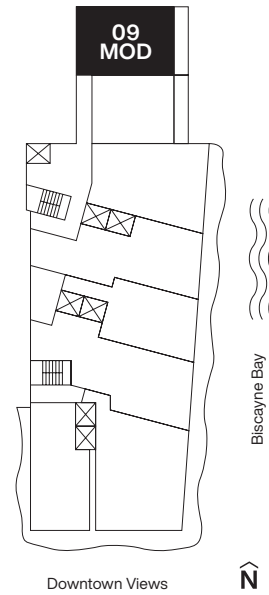
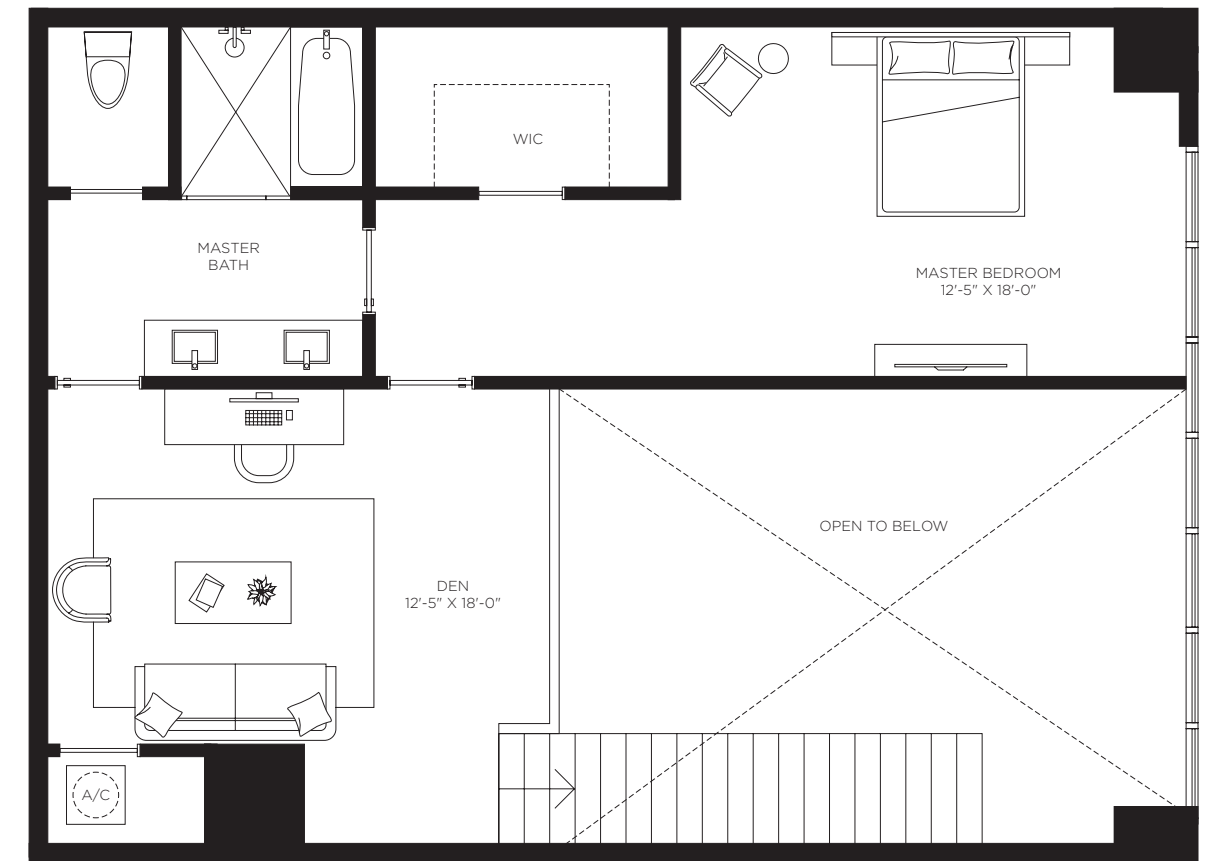
by **B&BITALIA**

The Art of Italian Living Curated by Piero Lissoni

1st Floor



2nd Floor



CasaBellaResidences.com / info@CasaBellaResidences.com / 305-290-1008



ORAL REPRESENTATIONS CANNOT BE RELIED UPON AS CORRECTLY STATING REPRESENTATIONS OF THE DEVELOPER. FOR CORRECT REPRESENTATIONS, MAKE REFERENCE TO THE DOCUMENTS REQUIRED BY SECTION 718.503, FLORIDA STATUTES, TO BE FURNISHED BY A DEVELOPER TO A BUYER OR LESSEE. 1400 Biscayne Condominium is developed by PRH 1400 BISCAYNE 1, LLC

The dimensions stated for this unit floor plan are approximate because there are various recognized methods for calculating the square footage of a unit. The square footage stated here is calculated from the exterior boundaries of the exterior walls to the centerline of interior demising walls without deductions for cutouts, curves, or architectural features. This method typically results in quoted dimensions greater than the dimensions that would be determined by using other accepted methods. The definition of "Unit" and the calculation method to be relied upon is set forth in the Developer's Prospectus and the method set forth in the Developer's Prospectus may result in a square footage calculation less than the method used here. The balconies depicted are conceptual and the size will vary based floor level of unit, final permitting and completed construction. The illustrations and images are conceptual and may vary from concept to actual construction. The floor plan, unit layout, locations of windows, doors, closets, plumbing fixtures, mechanical equipment, appliances, structural elements, architectural design elements, and the uses, configurations, and entries to rooms may change based on final approved plans, permitting, and completed construction. The furniture plan and the uses of space illustrated are suggested uses only and not intended to guaranty or represent any specific use of space. Furnishings, design features, fixtures, and décor illustrated are conceptual and are not included with purchase of a Unit. Consult the Developer's Prospectus for information on what is offered with the Unit and the calculation of the Unit square footage and dimensions. The Developer, PRH 1400 BISCAYNE 1, LLC, is a licensee of: The Related Group, B&B Italia; and Piero Lissoni, but none of these licensors is the Developer. © 2021 with all rights reserved PRH 1400 BISCAYNE 1, LLC